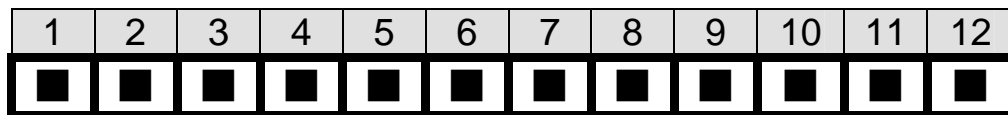


# BP-10S-RS-R40

## 10-Slot Backplane with 10 ISA Bus User Manual Ver. 4.0

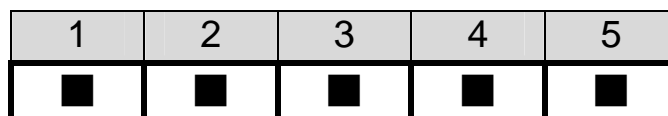
### 1. PW1: AT Power Connector

| Pin | Description | Pin | Description |
|-----|-------------|-----|-------------|
| 1   | PWRGD       | 7   | GND         |
| 2   | +5V         | 8   | GND         |
| 3   | +12V        | 9   | -5V         |
| 4   | -12V        | 10  | +5V         |
| 5   | GND         | 11  | +5V         |
| 6   | GND         | 12  | +5V         |



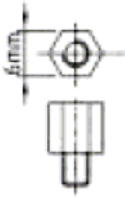
### 2. CN1: Voltage Connector

| Pin | Description |
|-----|-------------|
| 1   | +5V         |
| 2   | -5V         |
| 3   | -12V        |
| 4   | +12V        |
| 5   | GND         |



### 3. Notice:

- a. Recommend to use 6mm width spacer to install



- b. Torsion must less than 6lb-inch

### 4. Dimension:

