



IEI Technology Corp.



EBC-2100

EPIC-NANO Series Embedded Board Chassis

Quick Installation Guide

Version 3.0 February 24, 2009

Packing Content



A. Chassis x 1 pcs



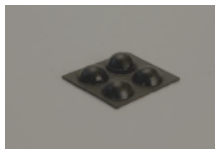
B. QIG



C. Screws



D. Wall Mounting Kits

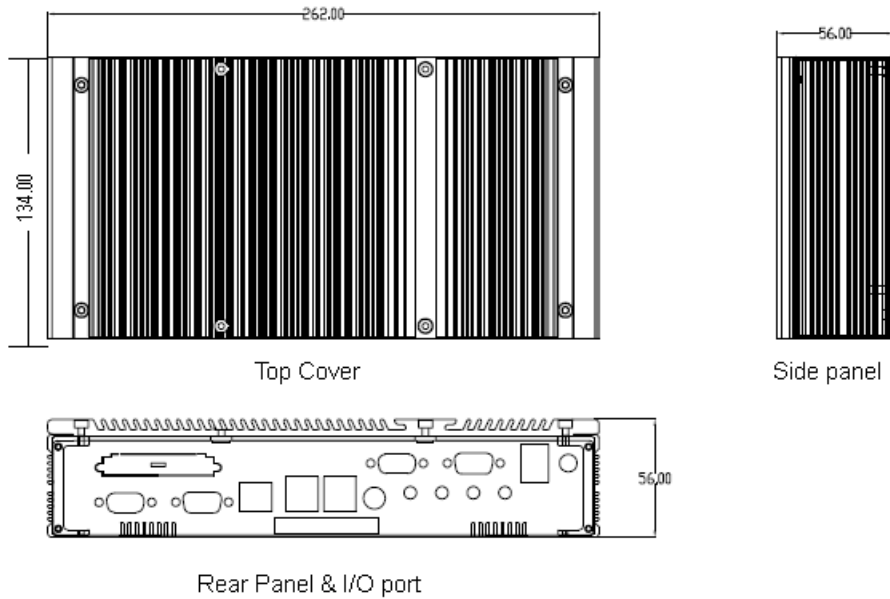


E. Rubber Foot Pad



F. Power Adapter with Power Cord

Product Dimensions



Product Specification

Material & Thickness	Cover/Base	AL 3.2mm / 1.0mm	
	Brackets	SECC 2.0mm	
Support IEI EPIC-NANO Embedded Board	NANO-8522 series		
	NANO-LX-800		
	NANO-GX-466		
I/O Interface	COM x(1 + 2), VGAx1, LANx1, CFx1, PS/2x1, USBx4, Audiox4, LPTx1, Power Switchx1, Power Jack x 1		
Internal Drive Bay	2.5" HDD(SATA or IDE)		
Color	Pantone Gray 7C		
Expansion Slots	Support PC/104 or PC/104+ module space		
Shock	Operating	3G acceleration peak to peak (11ms)	
	Non-Operating	10G acceleration peak to peak (11ms)	
Vibration	Operating	10~57Hz, 0.006" double amplitude displacement 57~500Hz, 1.0G acceleration peak to peak	
	Non-operating	5~17Hz, 0.1" double amplitude displacement 17~640Hz, 1.5G acceleration peak to peak	
Chassis Dimension	D134xW262xH56 mm	D5.27"xW10.3"xH2.2"	
Net Weight / Gross Weight	1 / 3 (kg)	2.1 / 6.3 (lb)	
CFM / CUFT	2.986CFM	0.6329cuft	

Optional Peripherals

A.1 Optional Socket type CPU Heatsink Module (P/N: 34000-000060-RS)

AL+CU Heatsink with screws

A.2 Optional Cooling Fan Module (P/N: 19100-000027-RS)

40x40x10mm, +12V ball bearing Fan; 3 Pin; 6000RPM with screws

A.3 Optional IDE cable (P/N: 32200-000037-RS)

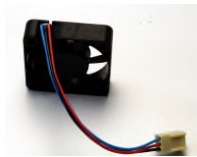
44pin IDE cable for 2.5" HDD

A.4 Optional SATA cable(P/N: 32000-114000-RS)

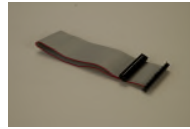
2.5" SATA HDD cable with 2-pin WAFER 2.0mm power cable for IEI NANO series



A.1



A.2



A.3



A.4



IEI Technology Corp.

Hardware Installation

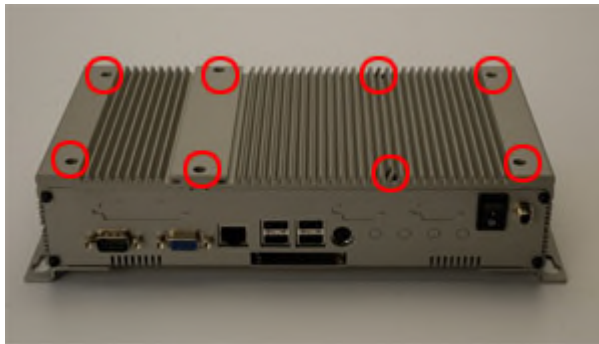
The following procedures demonstrate the installation of EBC-2100. Please read the precautions carefully before installing it.

Precautions

- 1. Always disconnect the unit from the power outlet whenever installing or fixing a component inside the chassis.**
- 2. If possible, always wear a grounded wrist strap when installing or fixing a component inside the chassis.**
- 3. Hold electronic circuit boards (EPIC-NANO board) by the edges only. Do not touch the components on the board unless it is necessary.**
- 4. Use the correct screws and never overly tighten them.**
- 5. Keep the whole set original package in case the unit has to be returned.**

Step 1

Remove eight screws from the cover by screwdrivers.



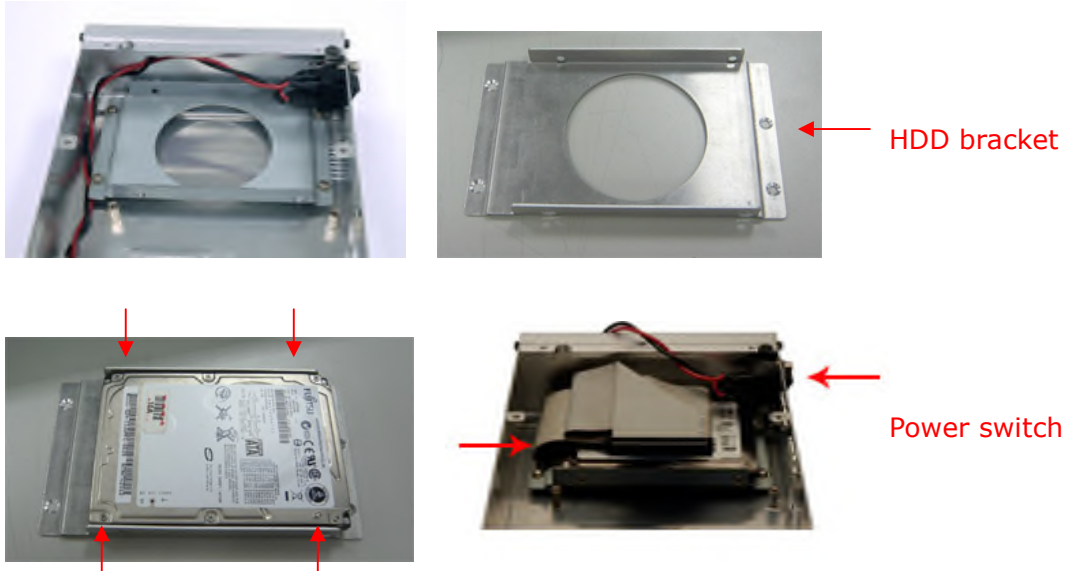
Step 2

Remove the plastic shield inside the chassis.



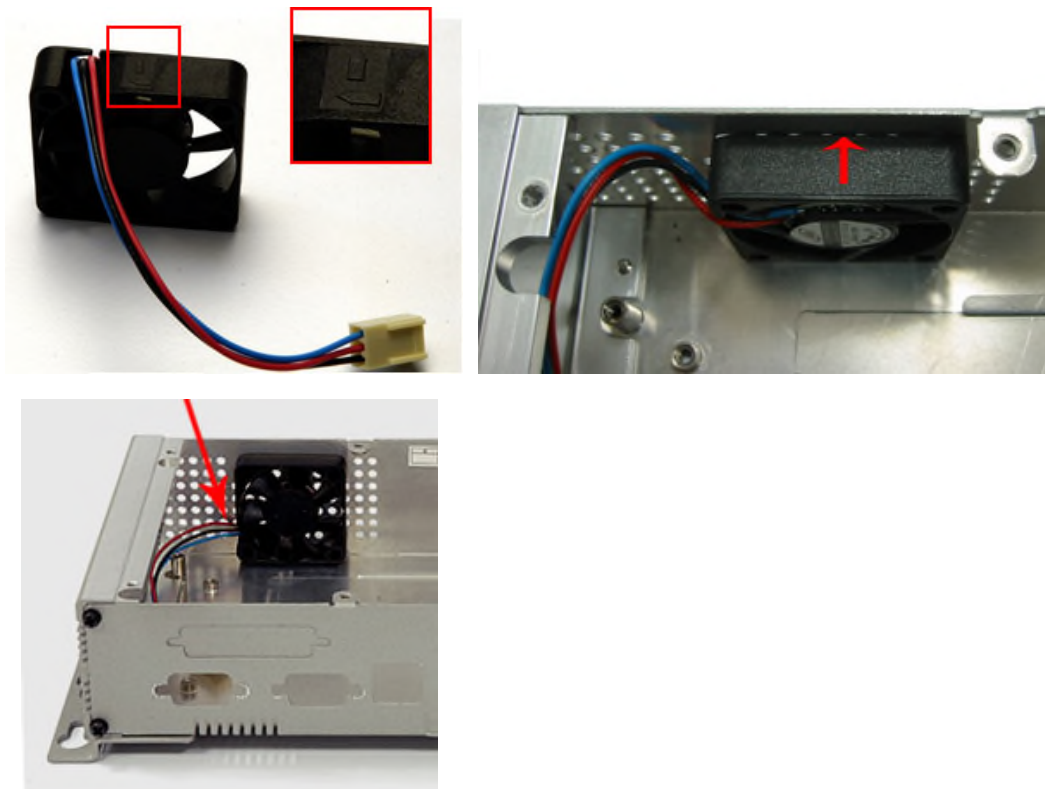
Step 3

If additional hard drive storage is required, simply remove the HDD bracket from the chassis. Then connect the hard drive to the HDD bracket, plug the HDD cable to the hard drive, and assemble the HDD bracket with HDD back into the chassis. The connector of the hard drive should be at the opposite side of the power switch after installation.



Step 4

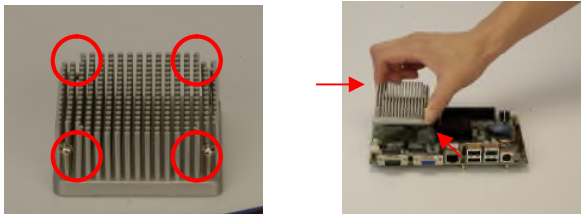
An optional 40mm cooling fan can accommodate in EBC-2100. The arrow sign on the cooling fan indicates the direction of airflow and it should point outside the chassis.





Step 5

Before installing CPU board into the chassis, CPU, Memory, heatsink and CPU cooling fan must be secured properly onto the CPU board. To prevent heatsink deformation, please handle the heatsink diagonally.



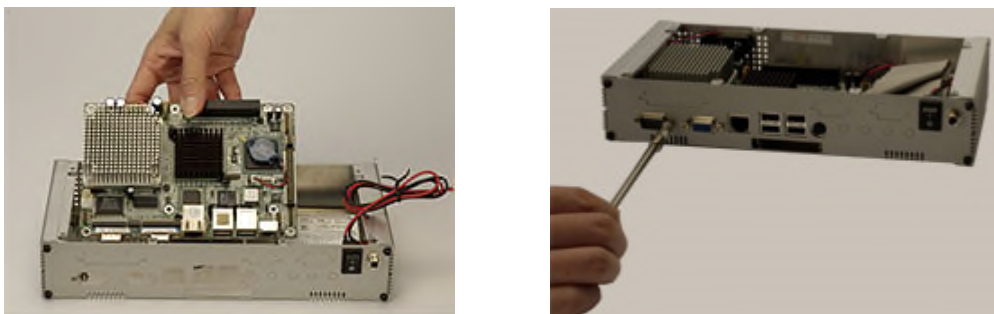
Step 6

Unscrew the COM port/VGA port with proper tool.



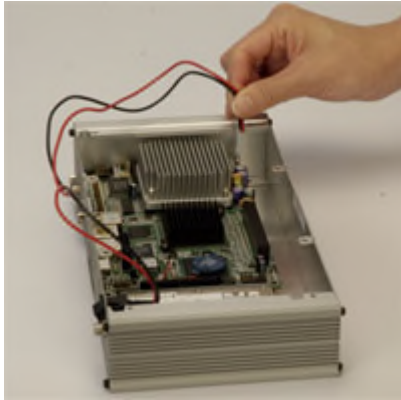
Step 7

Align the motherboard with the chassis standoffs, secure with screws for motherboard and COM port and VGA port.



Step 8

Connect the power cable and the hard drive cable to the embedded board.



Step 9

Place the cover back on the top of the case and secure with screws.

Step 10

If wall mounting is required, secure the wall mounting kits to the bottom of the chassis with screws. For desktop usage please apply the rubber foot pads to the bottom of the chassis.



Step 11

When replacing the system memory, simply remove the screws on the bottom cover then insert the memory to the memory slot. Then place the cover back on the chassis and secure with screws.



Contact Information

IEI Technology Corp.

TEL : 886-2-86916798

FAX : 886-2-66160029

Email: sales@iei.com.tw

Website: <http://www.ieiworld.com>

Address: No. 29, Jhongsing Rd., Sijhih City, Taipei County, 221, Taiwan