

# Peripheral

Single Board Computer

LCD Product Series

Chassis

Power supply

Peripheral

## RD-01

### IDE Removable Drive Bay

- ◆ Designed for 3.5" HDD
- ◆ Interface : IDE
- ◆ Internal cooling fan
- ◆ LED indicators for power & HDD



## RD-02

### Aluminum IDE Removable Drive Bay

- ◆ Inner & outer frame Aluminum material
- ◆ Designed for 3.5" HDD
- ◆ Interface : IDE
- ◆ Internal cooling fan
- ◆ LED indicators for power & HDD

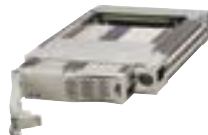


## RD-03

### 5.25" Serial ATA Removable Drive Bay

#### SPECIFICATIONS

- ◆ High quality data transfer rate up to 150MB/sec for Serial ATA 1.0 spec
- ◆ 64pin industrial DIN type connector for real-time plug & play Hot-Swap
- ◆ Full Aluminum construction with Plastic panel
- ◆ Three steps power control key lock
- ◆ Interface: Serial ATA
- ◆ LED indicators for power & HDD



Floating Kit Design!!



AS-35A Kit

## AS-25A/25C/35A

### Anti-vibration Drive Kit

#### SPECIFICATIONS

- ◆ Resistant different sides shock and vibration
- ◆ Support 2.5" HDD into 3.5" drive bay(AS-25A/25C) or 3.5" HDD into 5.25" drive bay(AS-35A)
- ◆ Vibration(Operating) meets:  
-MIL-STD-810F 514.5C-1 standard  
-5-20Hz, 1G peak to peak  
-60-200Hz, 3G peak to peak



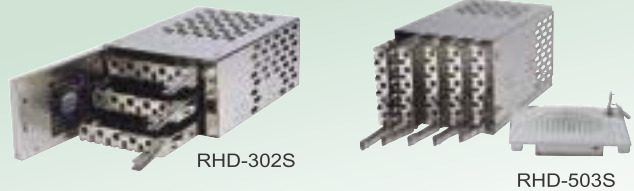
AS-25C Kit

#### ORDERING INFORMATION

- ◆ AS-25A : 2.5" Drive Anti-vibration Kit
- ◆ AS-25C : Enhanced 2.5" Drive Anti-vibration Kit
- ◆ AS-35A : 3.5" Drive Anti-vibration Kit

## RHD-302S/503S

### SCA2 Multi-drive Dock



RHD-302S

RHD-503S

#### SPECIFICATIONS

- ◆ Interface : SCA2, supports Wide, Ultra Wide or Ultra2 Wide SCSI (LVD mode)
- ◆ Latch control hot swappable trays
- ◆ Fits three standard 3.5" HDD into two 5.25" CD-ROM housing (RHD-302)/ Fits five standard 3.5" HDD into three 5.25" CD-ROM housing (RHD-503)
- ◆ Real panel for system I/O :  
-Two 68-pin Ultra Wide SCSI connectors  
-Three DIP switch for SCSI ID selection (RHD-302)  
Five DIP switch for SCSI ID selection (RHD-503)  
-Two power connectors (RHD-302)  
Three power connectors (RHD-503)  
-Alarm setting jumpers & buzzer
- ◆ Dimensions : 5.74" x 3.31" x 9.37" (W x H x D; RHD-302)  
5.75" x 5.04" x 9.57" (W x H x D; RHD-503)

#### ORDERING INFORMATION

- ◆ RHD-302S : 3 trays multi-drive dock; SCA2 interface
- ◆ RHD-503S : 5 trays multi-drive dock; SCA2 interface

## FCD-501 / 502 / 503



FCD-503

FCD-502

FCD-501

USB

FCD-501

#### SPECIFICATIONS

- ◆ 3 in 1 compact drive bay (FCD-501)
- ◆ 2 in 1 compact drive bay (FCD-502)
- ◆ 4 in 1 compact drive bay (FCD-503)

	FCD-501	FCD-502	FCD-503
Slim type CD-ROM	1	1	1
Slim type FDD	-	-	1
2.5" HDD	-	-	1
3.5" FDD	1	1	-
USB PORT	2	-	2

- ◆ Support standard 5.25" drive bay
- ◆ Includes convert board for CD-ROM and FDD
- ◆ Colors :Black (PANTONE BlackC) White (PANTONE413C)

#### ORDERING INFORMATION

- ◆ FCD-501 C : 3-in-1 compact drive bay
- ◆ FCD-502 C : 2-in-1 compact drive bay
- ◆ FCD-503 C : 4-in-1 compact drive bay  
C Color Code : B = Black, W = White

## FCD-301 3.5" compact drive bay with USB port

#### SPECIFICATION

- ◆ The most suitable USB cable for IEI'S CPU board
- ◆ Support standard 3.5"drive bay
- ◆ 5-pin female connector to CPU board's pin header
- ◆ Length: 60cm
- ◆ Color: White or black
- ◆ Pin definition:

PIN 1	PIN 2	PIN 3	PIN 4	PIN 5
VCC1	D1F-	D2F+	GND	GND

#### ORDERING INFORMATION

- ◆ FCD-301W : 3.5" compact drive bay with USB port, white color
- ◆ FCD-301B : 3.5" compact drive bay with USB port, black color

