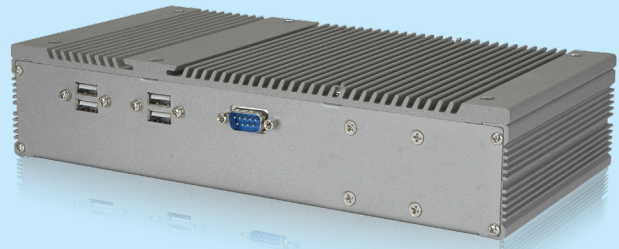


EBC-2102 Embedded Chassis for EPIC NANO Series



Features

- ◆ Fanless system with Intel® Atom™ D525 1.8 GHz dual-core processor
- ◆ Complete I/O Interfaces, including dual GbE, four COM, six USB, LPT
- ◆ Single 12V DC power input supports AT/ATX mode
- ◆ DDR3 supports up to 4 GB (D525/D425)



Specifications

Model Name	EBC-2102	
Chassis	Color	Cool Gray
	Dimensions (WxDxH) (mm)	262 x 134 x 56
	System Fan	1 x 4cm (Optional)
	Chassis Construction	Aluminum alloys with heavy duty metal
Motherboard	Motherboard Model	NANO-PV-D5251-R10, NANO-PV-D4251-R10, NANO-PV-N4551-R10
	M/B Size	EPIC (165mm x 115mm)
	Processor	refer to SBC
	Chipset	refer to SBC
	System Memory	D525/D425 memory supports up to DDR3 4 GB, N455 memory supports up to DDR3 2 GB
Storage	Hard Drive	1 x 2.5" SATA HDD bay
	CF Card/CFast	1
System Function	USB 2.0	6
	Ethernet	Dual Realtek 8111E GbE
	RS-232	4
	LPT	1
	Display	1 x VGA
	Audio	3 x Audio jack (Line-in, Line-out, Mic-in)
	Wireless	1 x 802.11b/g/n (optional for wireless model)
	Expansions	1 x PCI-104, 1 x PCIe Mini card slot reserved for Wi-Fi module
	Power	Power Input
Reliability	Power Consumption	2.21A @ 12V (Intel® Atom™ D525 with 2 GB 1066MHz DDR3) 2.11A @ 12V (Intel® Atom™ D425 with 2 GB 1066MHz DDR3) 2.00A @ 12V (Intel® Atom™ N455 with 2 GB 1066MHz DDR3)
	Mounting	Desktop, wall mount
	Operating Temperature	-10°C ~ 50°C fanless, -10°C ~ 60°C with CPU fan or system fan
	Operating Shock	Half-sine wave 3G, 11ms 3 shocks per axis
	Operating Vibration	Meet MI-STD-810F 514.5C-1
	Weight (Net/Gross)	1 kg

Packing list

1 x EBC-2102 Chassis	1 x Power cord
1 x 12V 60W power adapter (Part No.: 63040-010060-120-RS)	
1 x Wall mount kit	1 x Screw set
1 x Utility CD/QIG	1 x One Key Recovery CD

Options

Item	Part No.
Wi-Fi KIT	EMB-WIFI-KIT01-R11
Description	
1T1R Wi-Fi module kit for embedded system, IEEE802.11b/g/n, 1 x Wi-Fi module, 2 x RF cable, 2 x antenna, RoHS	

Ordering information

Part No.	Description
EBC-2102-R11	Embedded Chassis for NANO-D5251/D4251/N4551, compatible with 2.5" SATA/CFII hard drive, 4 x COM, 6 x USB, 1 x LPT, 60W power adapter silver, RoHS
CF-PV4010-R10	4010 system Fan, +12V ball bearing
NANO-PV-D5251-R10	EPIC with Intel® Atom™ D525 1.8 GHz, DDR3, VGA/LVDS, Dual GbE, USB 2.0, CF II, audio and SATA 3Gb/s, RoHS
NANO-PV-D4251-R10	EPIC with Intel® Atom™ D425 1.8 GHz, DDR3, VGA/LVDS, Dual GbE, USB 2.0, CF II, audio and SATA 3Gb/s, RoHS
NANO-PV-N4551-R10	EPIC with Intel® Atom™ N455 1.66 GHz, DDR3, VGA/LVDS, Dual GbE, USB 2.0, CF II, audio and SATA 3Gb/s, RoHS