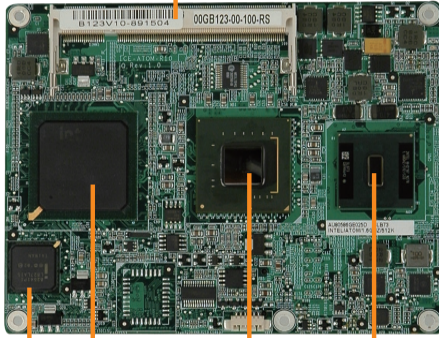


ICE-ATOM

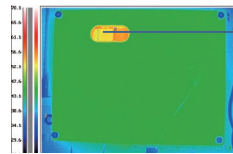
COM Express Basic Type 2 Module, Intel® Atom™ Processor, VGA/LVDS, GbE, SATA, USB and Audio

Fanless support with Heatspreader Only

DDR 2 400/533 up to 2GB

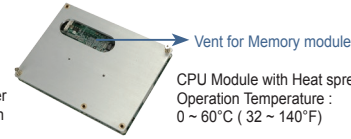


Intel® ICH7M Intel® 945GSE Intel® Atom™ Processor N270 Intel® 82541PI GbE



Memory

Ultra low power Fanless design



Vent for Memory module

CPU Module with Heat spreader
Operation Temperature :
0 ~ 60°C (32 ~ 140°F)

Power Saving / Cost Saving for Thermal design

| IEI Model | ICE-9152-R10 | ICE-9102-1GZ-R10 ICE-9102-1G512-R10 | ICE-ATOM-N270-R10 |
|-------------------|--|---|---|
| CPU | Socket 479 Intel® Pentium® M, Celeron® M processor with a 533/400MHz FSB | On board Intel® Celeron® M 1GHz zero cache or 1GHz 512KB cache processor | Intel® Atom™ Processor N270 1.6GHz with a 533MHz FSB |
| System Chipset | Intel® 915GME + ICH6-M | Intel® 910GMLE + ICH6-M | Intel® 945GSE + ICH7M |
| BIOS | AMI Flash BIOS | AMI Flash BIOS | AMI Flash BIOS |
| System Memory | One 200-pin 533/400MHz DDR2 SO-DIMM support up to 2GB | One 200-pin 400MHz DDR2 SO-DIMM support up to 2GB | One 200-pin 533/400MHz DDR2 SO-DIMM support up to 2GB |
| Ethernet | One Intel 82541PI GbE Chipset | One Intel 82541PI GbE Chipset | One Intel 82541PI GbE Chipset |
| I/O Interface | 8 x USB 2.0 / 2 x SATA 1 x IDE channel 1 x PCIe x16 signal or 2x SDVO signal | 8 x USB 2.0 / 2 x SATA 1 x IDE channel 2 x SDVO signal 4 x PCIe x1 signal 4 x PCI , 32 bit / 33 MHz PCI bus | 8 x USB2.0 / 2x SATA IDE channel 1 x SDVO signal 4 x PCIe x1 signal 4 x PCI , 32 bit / 33 MHz PCI bus |
| Display Interface | VGA Integrated in Intel 915GME Signal 18/24-bit Dual channel LVDS Signal | VGA Integrated in Intel 910GMLE Signal 18/24-bit Dual channel LVDS Signal | VGA/HDTV Integrated in Intel 945GSE Signal 18-bit Dual channel LVDS Signal |
| Power Supply | AT / ATX supported | AT / ATX supported | AT / ATX supported |
| Power consumption | 12V@2.09A (Pentium® M 1.5GHz) | 12V@1.33A (Celeron® M 1GZ/Celeron M 373) | 12V@0.95A (ATOM N270) |
| Thermal Solution | Heat Spreader with Cooler | Heat Spreader with Heat sink | Heat Spreader Only |

Specifications

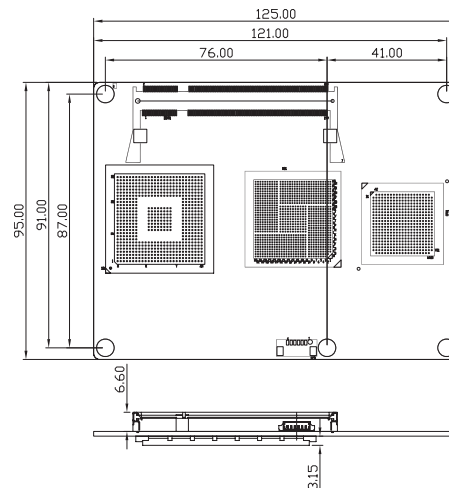
- ◆ CPU
Intel® Atom™ Processor N270 1.6GHz with a 533MHz FSB
- ◆ System Chipset
Intel® 945GSE
Intel® 82801GBM/ICH7M
- ◆ BIOS
AMI BIOS
- ◆ System Memory
One 200-pin 533/400MHz DDR2 SO-DIMM supported (system max. 2GB)
- ◆ Ethernet
One Intel 82541PI GbE Chipset
- ◆ I/O Interface
8 x USB 2.0 (to Base Board)
2 x SATA (to Base Board)
1 x IDE channel (to Base Board)
- ◆ Expansion
1 x SDVO signal to Base Board
4 x PCIe x1 signal to Base Board
4 x PCI , 32 bit / 33 MHz PCI bus to Base Board
- ◆ Display Interface
VGA/HDTV Integrated in Intel 945GSE Signal (to Base Board)
18-bit Dual channel LVDS Signal (to Base Board)
- ◆ Watchdog Timer
Software programmable supports 1 ~255 sec. System reset (Depend on Super I/O of Base Board)
- ◆ Power Supply
AT / ATX supported
- ◆ Power consumption
12V@0.95A (Intel® Atom™ N270 with 1GB DDR2)
- ◆ Temperature
operation: 0°C~ 60°C (32°F ~140°F)
- ◆ Humidity
operation: 5% ~95 non-condensing
- ◆ Dimension
125 mm x 95 mm
- ◆ Weight
GW: 700g NW 250g



Features

1. COM Express Type II Basic Module
2. Support 1x SDVO, 4x PCIe x1, 4x PCI Slot for expansion
3. Support Dual Display for VGA + LVDS
4. Support 8x USB2.0, 2x SATA, 1x IDE Interface
5. Ultra Low power design for Fanless solution

Dimensions (mm)



Packing List

| |
|------------------------------------|
| 1 x ICE-ATOM Single Board Computer |
| 1 x Heatspreader |
| 1 x Utility CD |
| 1 x QIG (Quick Installation Guide) |

Ordering Information

| Part No. | Description |
|-------------------|---|
| ICE-ATOM-N270-R10 | COM Express Basic type 2 Module with Intel® Atom™ N270 1.6G, VGA/LVDS, GbE, USB, SATA and Audio |
| ICE-DB-9S-R10 | Base Board for COM Express Type 2 modules |
| 34000-000231-RS | Heatsink for COM Express Module |